

Paynes Prairie Sheetflow Restoration

Project Managers:

Stu Pearson, P.E.

Tel: (352) 393-8803

Email: pearsonse@cityofgainesville.org

Alice Rankeillor, P.E.

Tel: (352) 393-1309

Email: rankeilloai@gru.com

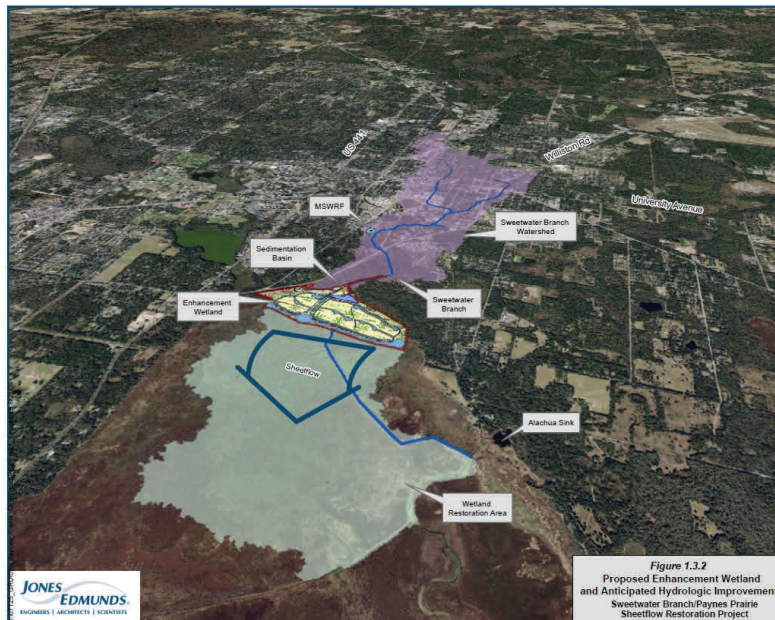
Description:

The proposed project will restore Sweetwater Branch sheetflow to Paynes Prairie and at a minimum this project is expected to provide the following benefits:

- Restore (re-hydrate) over 1,300 acres of formerly-impacted wetlands in Paynes Prairie
- Cost effectively attain regulatory water

quality requirements for the City of Gainesville and the Florida Department of Transportation

- Create about 125 acres of high-quality wetland wildlife habitat and a public use area for bird-watching and nature study within the Sweetwater Branch Wetland Park
- Naturally assimilate nutrients, sediments and other pollutants in Sweetwater Branch in order to protect Alachua Sink and the Floridan Aquifer
- Restore part of the overall water balance to Paynes Prairie, which has been impacted by diversion of water from the Prairie at Prairie Creek.
- Add additional conservation lands to the Paynes Prairie Preserve State Park.



For complete information on this
project, please visit the
[Paynes Prairie Sheetflow Project](#) page.